

Alabama All-State Jazz Band Audition Requirements 2025-26
High School Band (Grades 9-12)
BASS

Students may use an electric bass guitar or an acoustic double bass.

- **Scales (10 Points-1 Point Each)**

Students should perform the following scales and arpeggios as shown on the second page of this document and through the Jazz Division section on alaband.org. Scales should be played in a SWING STYLE in the order listed below. Each scale is listed in CONCERT PITCH.

Bb Blues Scale

F Blues Scale

Eb Major Scale and Arpeggio

C Dorian Scale and Arpeggio

Eb Dorian Scale and Arpeggio

F Dorian Scale and Arpeggio

Ab Dorian Scale and Arpeggio

Bb Mixolydian Scale and Arpeggio

Db Mixolydian Scale and Arpeggio

F Mixolydian Scale and Arpeggio

- **Etude (20 Points)**

The High School Etude III is available on the third page of this document and through the Jazz Division section on alaband.org.

3. Play-A-Long (35 Points Each-10 for Melody, 10 for Bass Line, 15 for Improvisation)

A. On Green Dolphin Street which can be found in: *Volume 34: Jam Session Play-A-Long and CD Set* by Jamey Aebersold. New Albany, IN: Jamey Aebersold Jazz. ISBN: 978-1-56224-192-6. www.jazzbooks.com. This book contains the tunes for all instruments and is not instrument specific. Students should record themselves playing along with the accompaniment CD or mp3. Play three times: Play the melody one time, construct and perform a walking bass line for the second chorus, and improvise the third chorus. Improvisation for **On Green Dolphin Street** can be done in the key of Eb Major. For an in-depth approach, study the many ii-V chord progressions in this tune. Listen to several recordings to get a feel for the proper interpretation. Sonny Rollins and Bill Evans recorded two standard versions.

B. Blue Moon which can be found in: *Volume 34: Jam Session Play-A-Long and CD Set* by Jamey Aebersold. New Albany, IN: Jamey Aebersold Jazz. ISBN: 978-1-56224-192-6. www.jazzbooks.com. This book contains the tunes for all instruments and is not instrument specific. Students should record themselves playing along with the accompaniment CD or mp3. Play three times: Play the melody one time, construct and perform a walking bass line for the second chorus, and improvise the third chorus. The improvisation on **Blue Moon** can be done primarily using the I-vi-ii-V progression in Eb Major. Students should seek out recordings to listen to for style and improvisation models. Art Tatum and Art Blakey & the Jazz Messengers made two great recordings.

Bass Guitar

HS All-State Jazz Scales

SWING $\text{♩} = 120$

Bb Blues Scale

F Blues Scale



Eb Major Scale

Eb Major Arpeggio



5

C Dorian Scale

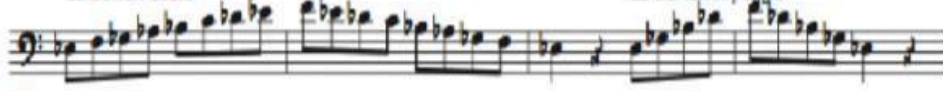
C Dorian Arpeggio



9

Eb Dorian Scale

Eb Dorian Arpeggio



13

F Dorian Scale

F Dorian Arpeggio



17

Ab Dorian Scale

Ab Dorian Arpeggio



21

Bb Mixolydian Scale

Bb Mixolydian Arpeggio



25

Db Mixolydian Scale

Db Mixolydian Arpeggio



29

F Mixolydian Scale

F Mixolydian Arpeggio



33

AUDITION ÉTUDE III

BASS

TOM WOLFE

Swing
♩ = 150

