

Alabama All-State Jazz Band Audition Requirements 2025-26
High School Band (Grades 9-12)
TRUMPET

• **Scales (10 Points - 1 Point Each)**

Students should perform the following scales and arpeggios as shown on the second page of this document and through the Jazz Division section on alaband.org. Scales should be played in a SWING STYLE in the order listed below. Each scale is listed in CONCERT PITCH.

Bb Blues Scale

F Blues Scale

Eb Major Scale and Arpeggio

C Dorian Scale and Arpeggio

Eb Dorian Scale and Arpeggio

F Dorian Scale and Arpeggio

Ab Dorian Scale and Arpeggio

Bb Mixolydian Scale and Arpeggio

Db Mixolydian Scale and Arpeggio

F Mixolydian Scale and Arpeggio

2. Etude (20 Points)

The High School Etude III is available on the third page of this document and through the Jazz Division section on alaband.org. Players interested in being considered for Lead Trumpet spots should perform the higher notes when the etude has a divisi section.

3. Play-A-Long (30 Points Each - 15 for Melody, 15 for Improvisation)

A. On Green Dolphin Street which can be found in: *Volume 34: Jam Session Play-A-Long and CD Set* by Jamey Aebersold. New Albany, IN: Jamey Aebersold Jazz. ISBN: 978-1-56224-192-6. www.jazzbooks.com. This book is not instrument specific. Students should use the **Bb section** of the book. Students should seek out recordings to listen for style and improvisation models.

For this section of the audition, students should record themselves playing along with the Full Accompaniment. The backtrack for Full Accompaniment is available with purchase of this book and through the Google Drive folder with these requirements.

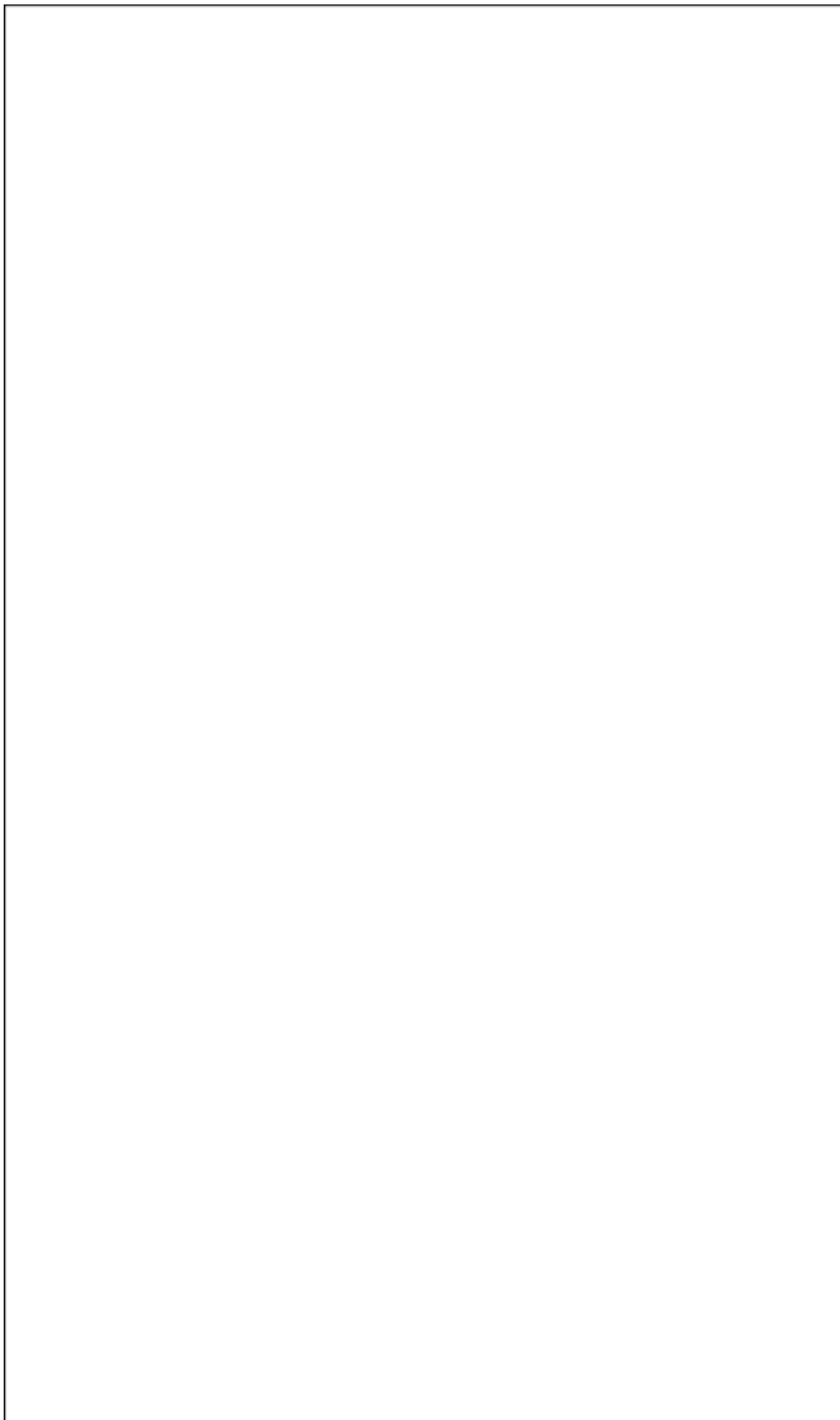
With the Full Accompaniment, play **On Green Dolphin Street** two times: play the melody one time and improvise during the second chorus (1st time melody, 2nd time improvisation).

B. Blue Moon which can be found in: *Volume 34: Jam Session Play-A-Long and CD Set* by Jamey Aebersold. New Albany, IN: Jamey Aebersold Jazz. ISBN: 978-1-56224-192-6. www.jazzbooks.com. This book is not instrument specific. Students should use the **Bb section** of the book. Students should seek out recordings to listen for style and improvisation models.

For this section of the audition, students should record themselves playing along with the Full Accompaniment. The backtrack for Full Accompaniment is available with purchase of this book and through the Google Drive folder with these requirements.

With the Full Accompaniment, play **Blue Moon** two times: play the melody one time and improvise during the second chorus (1st time melody, 2nd time improvisation).

4. Tone Quality (10 Points)



Trumpet in B \flat

HS All-State Jazz Scales

SWING $\text{♩} = 120$

B \flat Blues Scale



F Blues Scale



E \flat Major Scale



E \flat Major Arpeggio



5

C Dorian Scale



C Dorian Arpeggio

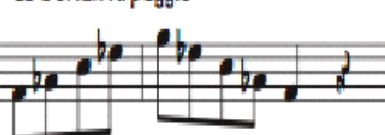


9

E \flat Dorian Scale



E \flat Dorian Arpeggio



13

F Dorian Scale



F Dorian Arpeggio



17

A \flat Dorian Scale



A \flat Dorian Arpeggio



21

B \flat Mixolydian Scale



B \flat Mixolydian Arpeggio



25

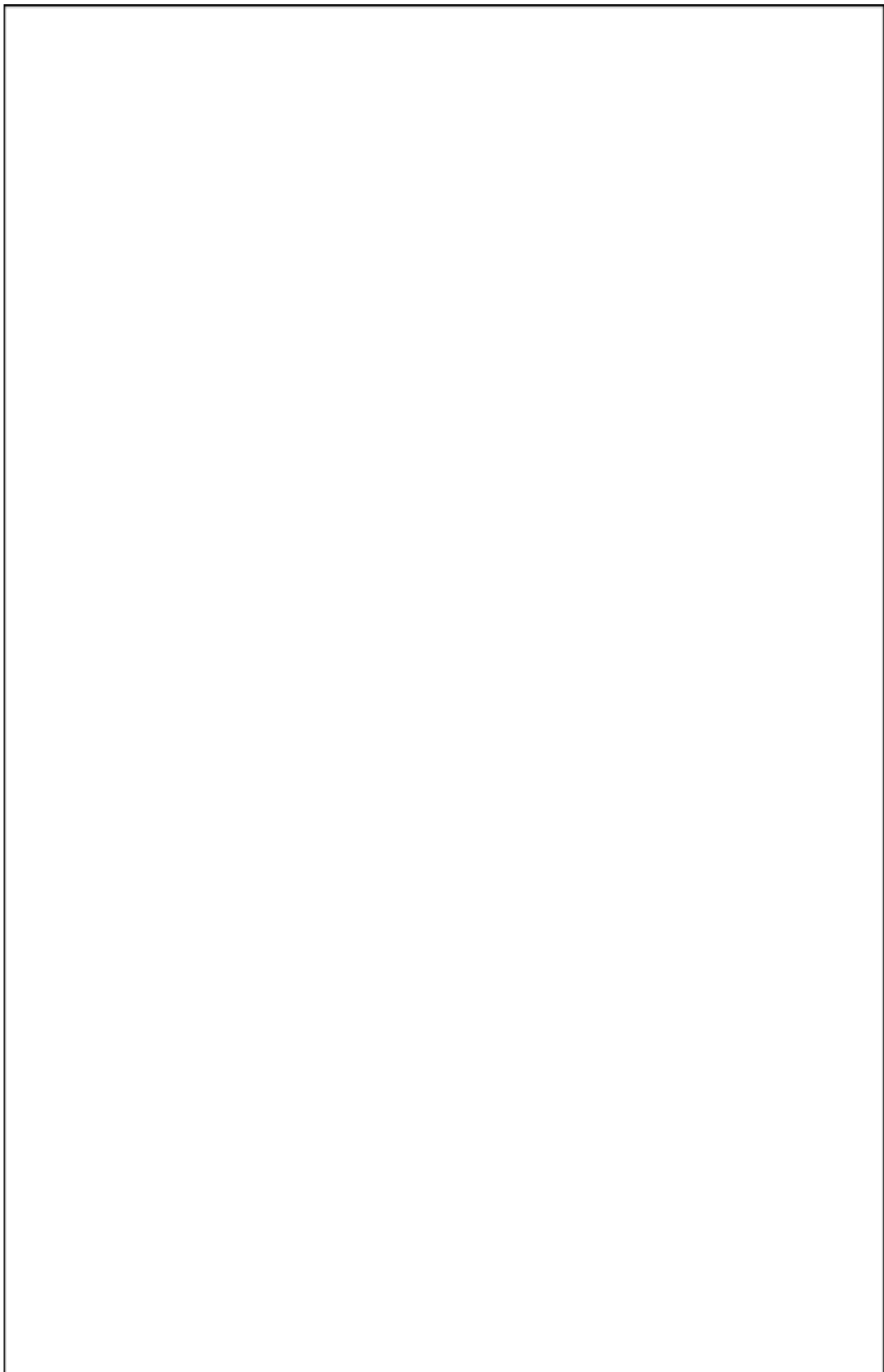
D \flat Mixolydian Scale



D \flat Mixolydian Arpeggio



29



AUDITION ETUDE III

TRUMPET

TOM WOLFE

SWING

$\text{♩} = 150$

**THOSE AUDITIONING FOR LEAD TRUMPET PLAY THE TOP NOTES. OTHER CHAIRS PLAY THE BOTTOM NOTES.