

Alabama All-State Jazz Band Audition Requirements 2025-26
High School Band (Grades 9-12)
TROMBONE

• **Scales (10 Points - 1 Point Each)**

Students should perform the following scales and arpeggios as shown on the second page of this document and through the Jazz Division section on alaband.org. Scales should be played in a SWING STYLE in the order listed below. Each scale is listed in CONCERT PITCH.

Bb Blues Scale

F Blues Scale

Eb Major Scale and Arpeggio

C Dorian Scale and Arpeggio

Eb Dorian Scale and Arpeggio

F Dorian Scale and Arpeggio

Ab Dorian Scale and Arpeggio

Bb Mixolydian Scale and Arpeggio

Db Mixolydian Scale and Arpeggio

F Mixolydian Scale and Arpeggio

2. Etude (20 Points)

The High School Etude 1 is available on the third page of this document and through the Jazz Division section on alaband.org.

3. Play-A-Long (30 Points Each - 15 for Melody, 15 for Improvisation)

A. On Green Dolphin Street which can be found in: *Volume 34: Jam Session Play-A-Long and CD Set* by Jamey Aebersold. New Albany, IN: Jamey Aebersold Jazz. ISBN: 978-1-56224-192-6. www.jazzbooks.com. This book is not instrument specific. Students should use the **Bass Clef section** of the book. Students should seek out recordings to listen for style and improvisation models.

For this section of the audition, students should record themselves playing along with the Full Accompaniment. The backtrack for Full Accompaniment is available with purchase of this book and through the Google Drive folder with these requirements.

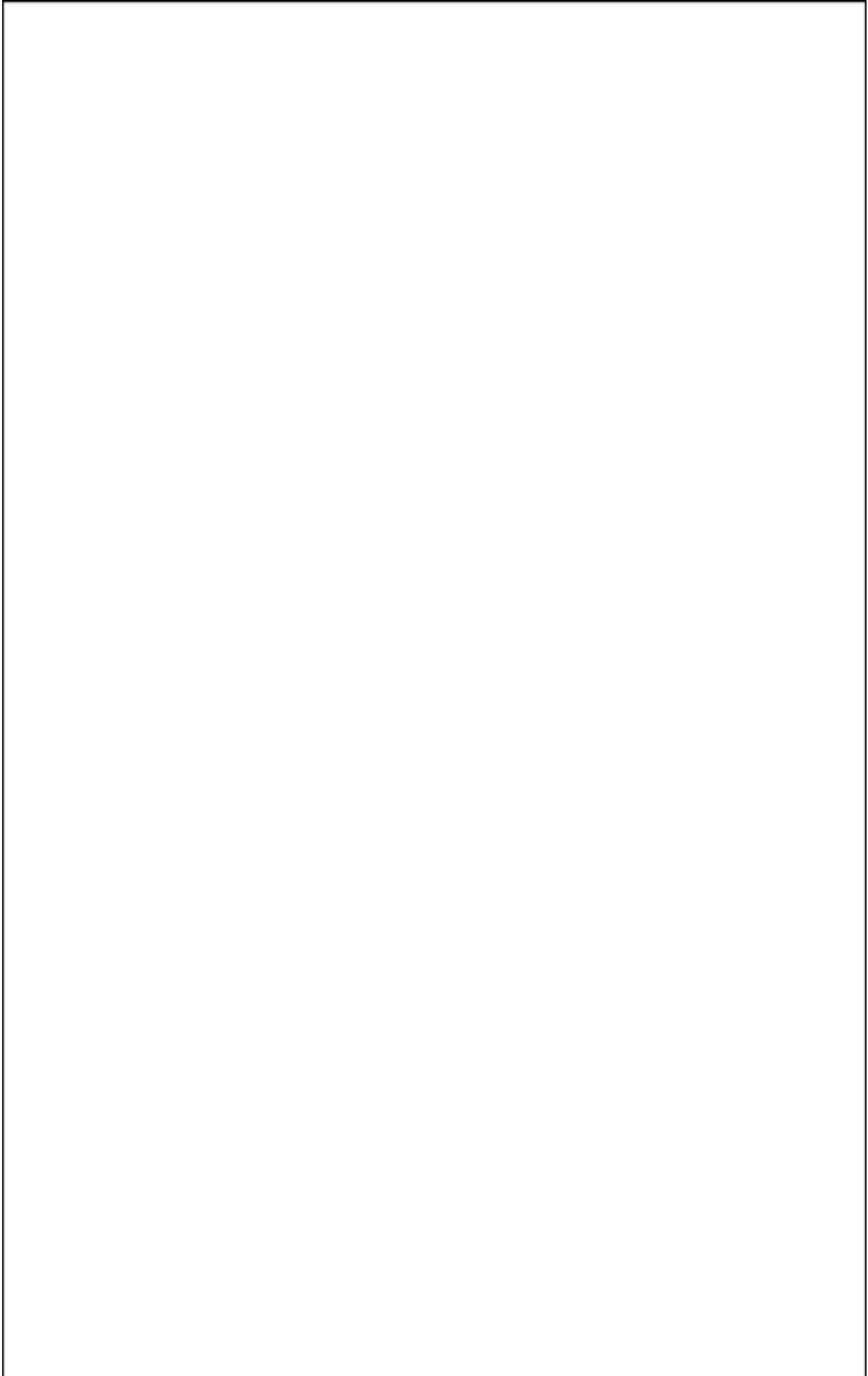
With the Full Accompaniment, play **On Green Dolphin Street** two times: play the melody one time and improvise during the second chorus (1st time melody, 2nd time improvisation).

B. Blue Moon which can be found in: *Volume 34: Jam Session Play-A-Long and CD Set* by Jamey Aebersold. New Albany, IN: Jamey Aebersold Jazz. ISBN: 978-1-56224-192-6. www.jazzbooks.com. This book is not instrument specific. Students should use the **Bass Clef section** of the book. Students should seek out recordings to listen for style and improvisation models.

For this section of the audition, students should record themselves playing along with the Full Accompaniment. The backtrack for Full Accompaniment is available with purchase of this book and through the Google Drive folder with these requirements.

With the Full Accompaniment, play **Blue Moon** two times: play the melody one time and improvise during the second chorus (1st time melody, 2nd time improvisation).

4. Tone Quality (10 Points)



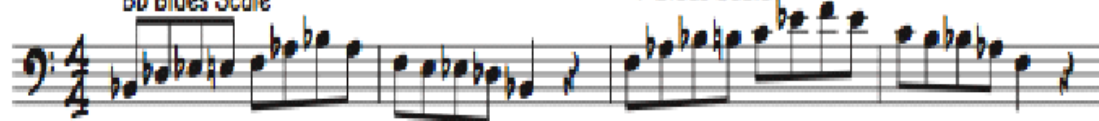
Trombone

HS All-State Jazz Scales

SWING ♩ = 120

Bb Blues Scale

F Blues Scale



Eb Major Scale

Eb Major Arpeggio



5

C Dorian Scale

C Dorian Arpeggio



9

Eb Dorian Scale

Eb Dorian Arpeggio



13

F Dorian Scale

F Dorian Arpeggio



17

Ab Dorian Scale

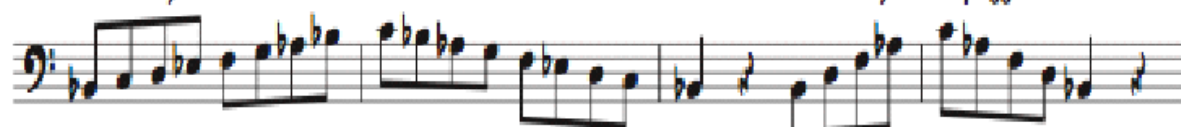
Ab Dorian Arpeggio



21

Bb Mixolydian Scale

Bb Mixolydian Arpeggio

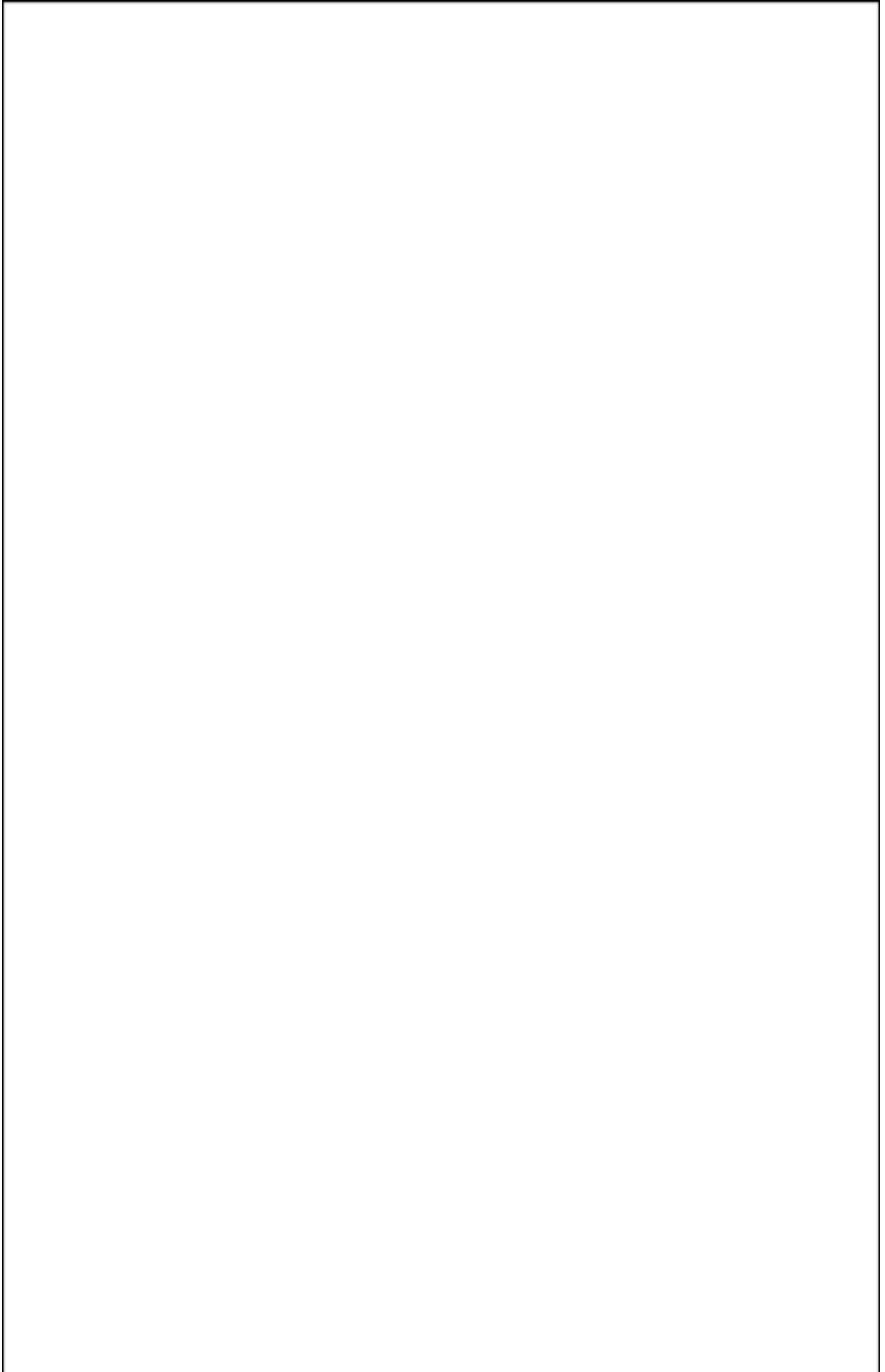


25

Db Mixolydian Scale

Db Mixolydian Arpeggio





AUDITION ETUDE III

TROMBONE **TOM WOLFE**

SWING
♩ = 150

ne

5

1

15

17

***THOSE AUDITIONING FOR LEAD TROMBONE, PLAY THE TOP NOTES. ALL OTHERS PLAY THE BOTTOM NOTES.