

Alabama All-State Jazz Band Audition Requirements 2025-26
High School Band (Grades 9-12)
GUITAR

- **Scales (10 Points-1 Point Each)**

Students should perform the following scales and arpeggios as shown on the second page of this document and through the Jazz Division section on alaband.org. Scales should be played in a SWING STYLE in the order listed below. Each scale is listed in CONCERT PITCH.

Bb Blues Scale

F Blues Scale

Eb Major Scale and Arpeggio

C Dorian Scale and Arpeggio

Eb Dorian Scale and Arpeggio

F Dorian Scale and Arpeggio

Ab Dorian Scale and Arpeggio

Bb Mixolydian Scale and Arpeggio

Db Mixolydian Scale and Arpeggio

F Mixolydian Scale and Arpeggio

- **Etude (20 Points)**

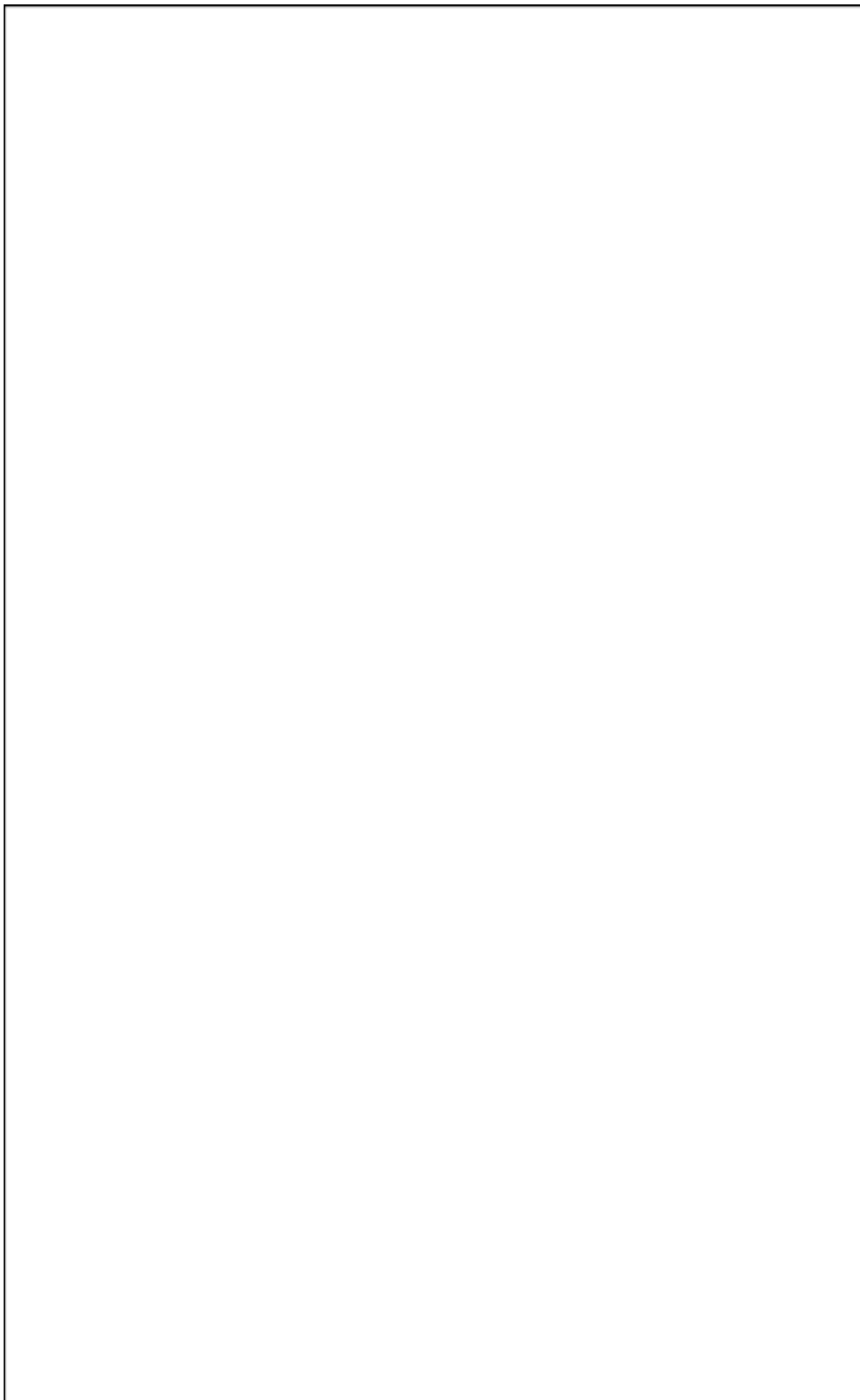
The High School Etude III is available on the third page of this document and through the Jazz Division section on alaband.org.

3. Play-A-Long (35 Points Each-10 for Melody, 10 for Comping, 15 for Improvisation)

A. On Green Dolphin Street which can be found in: *Volume 34: Jam Session Play-A-Long and CD Set* by Jamey Aebersold. New Albany, IN: Jamey Aebersold Jazz. ISBN: 978-1-56224-192-6. www.jazzbooks.com. This book contains the tunes for all instruments and is not instrument specific. Students should record themselves playing along with the accompaniment CD or mp3. Play three times: Play the melody one time, comp the second time, and improvise the third time. The recording will continue for several choruses, but students will only play three choruses (1st time melody, 2nd time comping, 3rd time improvisation). Improvisation for **On Green Dolphin Street** can be done in the key of Eb Major. For an in-depth approach, study the many ii-V chord progressions in this tune. Listen to several recordings to get a feel for the proper interpretation. Sonny Rollins and Bill Evans recorded two standard versions.

B. Blue Moon which can be found in: *Volume 34: Jam Session Play-A-Long and CD Set* by Jamey Aebersold. New Albany, IN: Jamey Aebersold Jazz. ISBN: 978-1-56224-192-6. www.jazzbooks.com. This book contains the tunes for all instruments and is not instrument specific. Students should record themselves playing along with the accompaniment CD or mp3. Play three times: Play the melody one time, comp the second time, and improvise the third time. The improvisation on **Blue Moon** can be done primarily using the I-vi-ii-V progression in Eb

Major. Students should seek out recordings to listen to for style and improvisation models. Art Tatum and Art Blakey & the Jazz Messengers made two great recordings.



Guitar

HS All-State Jazz Scales

SWING ♩ = 120

Bb Blues Scale

F Blues Scale



Eb Major Scale

Eb Major Arpeggio



5

C Dorian Scale

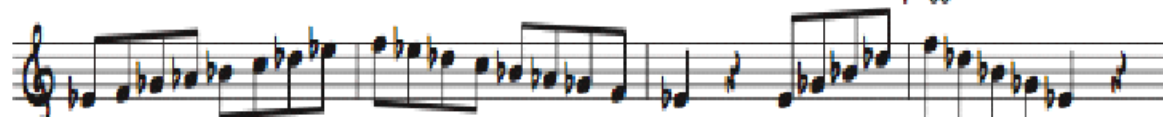
C Dorian Arpeggio



9

Eb Dorian Scale

Eb Dorian Arpeggio



13

F Dorian Scale

F Dorian Arpeggio



17

Ab Dorian Scale

Ab Dorian Arpeggio



21

Bb Mixolydian Scale

Bb Mixolydian Arpeggio



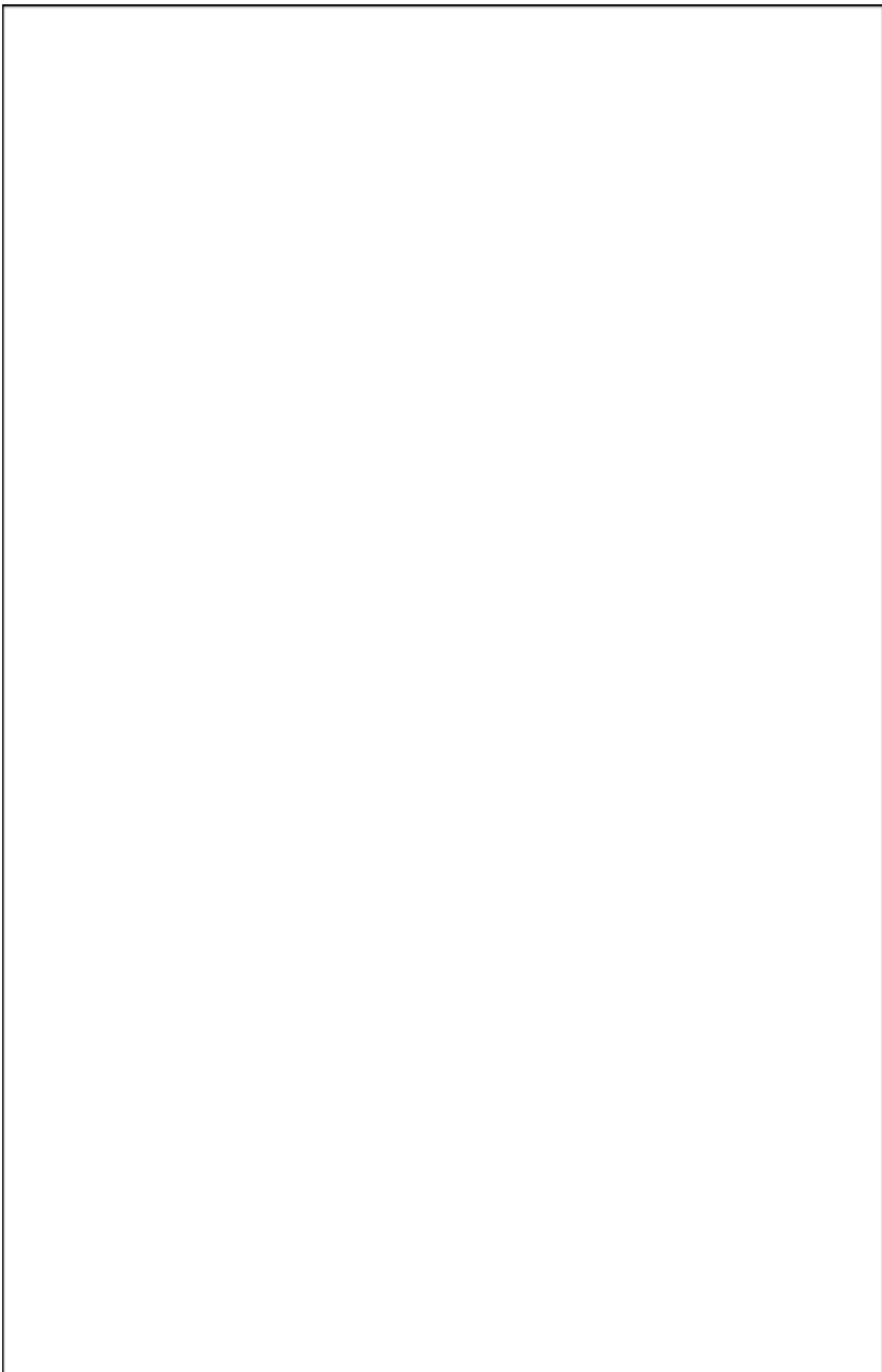
25

Db Mixolydian Scale

Db Mixolydian Arpeggio



29



AUDITION ETUDE III

QUITAR

TOM WOLFE

SWING

$\text{♩} = 150$

5

1

13

17

