

Alabama All-State Jazz Band Audition Requirements 2023-24
High School Band (Grades 9-12)
GUITAR

1. Scales (10 Points-1 Point Each)

Students should perform the following scales and arpeggios as shown on the second page of this document and through the Jazz Division section on alaband.org. Scales should be played in a SWING STYLE in the order listed below. Each scale is listed in CONCERT PITCH.

Bb Blues Scale
F Blues Scale
Eb Major Scale and Arpeggio
C Dorian Scale and Arpeggio
Eb Dorian Scale and Arpeggio
F Dorian Scale and Arpeggio
Ab Dorian Scale and Arpeggio
Bb Mixolydian Scale and Arpeggio
Db Mixolydian Scale and Arpeggio
F Mixolydian Scale and Arpeggio

2. Etude (20 Points)

The High School Etude I is available on the third page of this document and through the Jazz Division section on alaband.org.

3. Play-A-Long (35 Points Each-10 for Melody, 10 for Comping, 15 for Improvisation)

A. Song For My Father which can be found in: *Volume 54: Maiden Voyage, Play-A-Long Book and CD Set* by Jamey Aebersold. New Albany, IN: Jamey Aebersold Jazz. ISBN: 978-1-56224-212-1. www.jazzbooks.com. This book contains the tunes for all instruments and is not instrument specific. Students should record themselves playing along with the accompaniment CD or mp3. Play three times: Play the melody one time, comp the second time, and improvise the third time. The recording will continue for several choruses, but students will only play three choruses (1st time melody, 2nd time comping, 3rd time improvisation).

B. Summertime which can be found in: *Volume 54: Maiden Voyage, Play-A-Long Book and CD Set* by Jamey Aebersold. New Albany, IN: Jamey Aebersold Jazz. ISBN: 978-1-56224-212-1. www.jazzbooks.com. This book contains the tunes for all instruments and is not instrument specific. Students should record themselves playing along with the accompaniment CD or mp3. Play three times: Play the melody one time, comp the second time, and improvise the third time.

HS All-State Jazz Scales

SWING $\text{♩} = 120$

Bb Blues Scale



F Blues Scale

Eb Major Scale



Eb Major Arpeggio

C Dorian Scale



C Dorian Arpeggio

Eb Dorian Scale



Eb Dorian Arpeggio

F Dorian Scale



F Dorian Arpeggio

Ab Dorian Scale



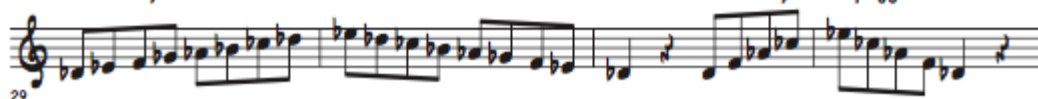
Ab Dorian Arpeggio

Bb Mixolydian Scale



Bb Mixolydian Arpeggio

Db Mixolydian Scale



Db Mixolydian Arpeggio

F Mixolydian Scale



F Mixolydian Arpeggio

GUITAR

AUDITION ETUDE I

TOM WOLFE

SWING
 ♩ = 120

G MIN7 C7 G MIN7
 C7 F MA7 B^b13 A MIN7
 D7(b9) G MIN7 C7
 A MIN7 D7(b9) G MIN7
 C7 F⁶9 F MA7(#11)