

**Alabama All-State Jazz Band Audition Requirements 2023-24**  
**High School Band (Grades 9-12)**  
**BASS**

**Students may use an electric bass guitar or an acoustic double bass.**

**1. Scales (10 Points-1 Point Each)**

Students should perform the following scales and arpeggios as shown on the second page of this document and through the Jazz Division section on [alaband.org](http://alaband.org). Scales should be played in a SWING STYLE in the order listed below. Each scale is listed in CONCERT PITCH.

- Bb Blues Scale
- F Blues Scale
- Eb Major Scale and Arpeggio
- C Dorian Scale and Arpeggio
- Eb Dorian Scale and Arpeggio
- F Dorian Scale and Arpeggio
- Ab Dorian Scale and Arpeggio
- Bb Mixolydian Scale and Arpeggio
- Db Mixolydian Scale and Arpeggio
- F Mixolydian Scale and Arpeggio

**2. Etude (20 Points)**

The High School Etude I is available on the third page of this document and through the Jazz Division section on [alaband.org](http://alaband.org).

**3. Play-A-Long (35 Points Each-10 for Melody, 10 for Bass Line, 15 for Improvisation)**

**A. Song For My Father** which can be found in: *Volume 54: Maiden Voyage, Play-A-Long Book and CD Set* by Jamey Aebersold. New Albany, IN: Jamey Aebersold Jazz. ISBN: 978-1-56224-212-1. [www.jazzbooks.com](http://www.jazzbooks.com). This book contains the tunes for all instruments and is not instrument specific. Students should record themselves playing along with the accompaniment CD or mp3. Play three times: Play the melody one time, construct and perform a walking bass line for the second chorus, and improvise the third chorus.

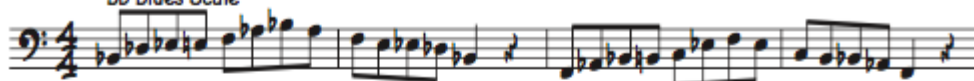
**B. Summertime** which can be found in: *Volume 54: Maiden Voyage, Play-A-Long Book and CD Set* by Jamey Aebersold. New Albany, IN: Jamey Aebersold Jazz. ISBN: 978-1-56224-212-1. [www.jazzbooks.com](http://www.jazzbooks.com). This book contains the tunes for all instruments and is not instrument specific. Students should record themselves playing along with the accompaniment CD or mp3. Play three times: Play the melody one time, construct and perform a walking bass line for the second chorus, and improvise the third chorus.

## HS All-State Jazz Scales

SWING  $\text{♩} = 120$ 

Bb Blues Scale

F Blues Scale



Eb Major Scale

Eb Major Arpeggio



5

C Dorian Scale

C Dorian Arpeggio



9

Eb Dorian Scale

Eb Dorian Arpeggio



13

F Dorian Scale

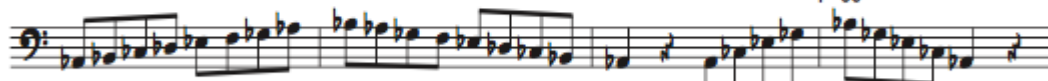
F Dorian Arpeggio



17

Ab Dorian Scale

Ab Dorian Arpeggio



21

Bb Mixolydian Scale

Bb Mixolydian Arpeggio



25

Db Mixolydian Scale

Db Mixolydian Arpeggio



29

F Mixolydian Scale

F Mixolydian Arpeggio



33

# BASS

# AUDITION ETUDE I

TOM WOLFE

SWING  
♩=120

G MIN7 C7 G MIN7

C7 F MA7 B<sup>b</sup>13 A MIN7

D7(b9) G MIN7 C7 A MIN7

D7(b9) G MIN7 C7 F MA7(#11)

5 9 13