

**Alabama All-State Jazz Band Audition Requirements 2021-2022**  
**Middle School Band**  
**Trombone**

**1. Scales (10 Points Total - 1 point for each Scale, 1 point for each Arpeggio)**

Students should perform the following scales and arpeggios as shown on the second page of this document and through the ABA website. Scales should be played in a SWING STYLE in the order listed below. Each scale and arpeggio listed are in CONCERT PITCH.

- Bb Major Scale
- Bb Major Arpeggio
- Bb Blues Scale
- Eb Major Scale
- Eb Major Arpeggio
- Eb Blues Scale
- C Dorian Scale
- C Dorian Arpeggio
- F Blues Scale
- F Minor Pentatonic Scale

**2. Etude (40 Points)**

The Middle School Etude II is available on the third page of this document and through the ABA website. A full ensemble recording with Finale midi instruments is available for practice purposes through the ABA website, but the Finale midi recording should not be used during the audition recording.

**3. Play-A-Long (40 Points Total - 30 for Melody, 10 for Improvisation)**

Watermelon Man which can be found in: *Volume 54: Maiden Voyage, Play-A-Long Book and CD Set* by Jamey Aebersold. New Albany, IN: Jamey Aebersold Jazz. ISBN: 978-1-56224-212-1. [www.jazzbooks.com](http://www.jazzbooks.com). This book contains the tunes for all instruments and is not instrument specific. Students should use the Bass Clef section of the book. Students should record themselves playing along with the full accompaniment. The Backtrack for FULL accompaniment is available with purchase of this book and through the Google Drive folder with these requirements.

With the FULL accompaniment, play the melody one time, improvise the second chorus, and play the melody again (1<sup>st</sup> time melody, 2<sup>nd</sup> time improvisation, 3<sup>rd</sup> time melody again). The improvisation on Watermelon Man can be done using either the F blues scale (concert pitch) or the F minor pentatonic scale (which is the F blues scale minus the 4<sup>th</sup> note) throughout. Students should seek out recordings to listen for style and improvisation models.

**4. Tone Quality (10 Points)**

Trombone

# MS All-State Jazz Scales

SWING

$\text{♩} = 120$

Bb Major Scale

Bb Major Arpeggio



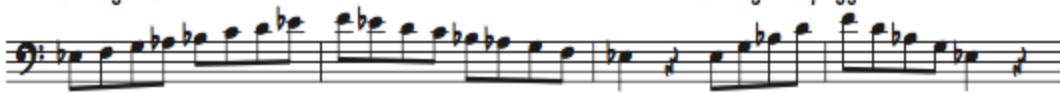
Bb Blues Scale



5

Eb Major Scale

Eb Major Arpeggio



7

Eb Blues Scale



11

C Dorian Scale

C Dorian Arpeggio



13

F Blues Scale



17

F Minor Pentatonic Scale



19

TROMBONE

# MIDDLE SCHOOL AUDITION ETUDE II

RON GOLOSTEIN

SWING

1 2 3 4

5 6 7 8

9 10 11 12